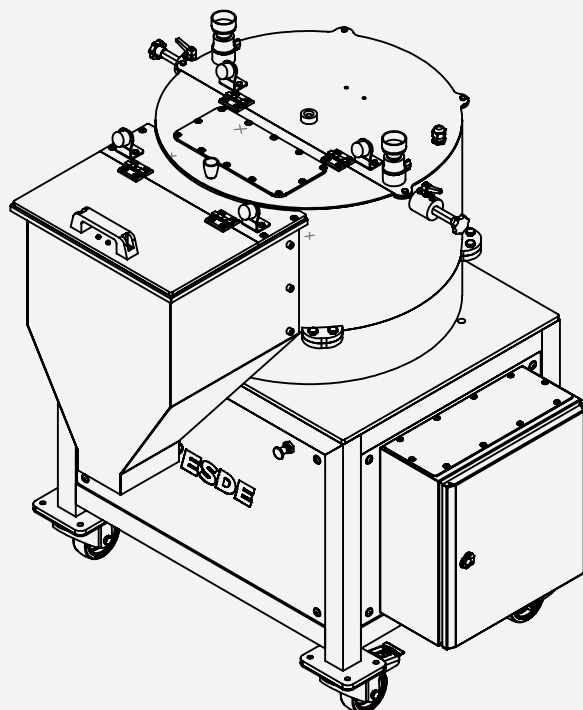


Semi Auto. Coating Machine

SD-8107

The SD-8107 Semi Automatic Coating Machine offers the convenience of semi-automatic batch coating technology. It comes with 600 mm tambour , and is equipped with an electrical panel controlled by a semi-automatic system. This design choice allows for cost savings as it eliminates the need for an automatic scale as part of the hardware. However, all other equipment, including the mixing drum and dosing lines, operates semi automatically, enabling the automatic coating of individual batches.



Furthermore:

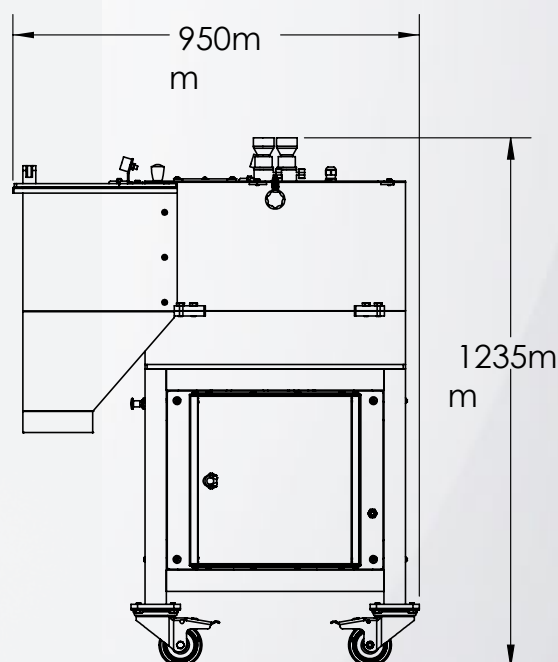
Rotary Coaters, renowned for their rapid and uniform spraying capabilities, are an ideal choice for various applications. When integrated with the appropriate application technology, this rotary system excels at ensuring the optimal dispersion of pesticides and other plant protection products onto the seeds.





SEMI AUTO. COATING MACHINE

SD-8107



Capacity:

± 1 kg– 10 kg

Dimensions:

1040 x 950 x1 235 mm (LxWxH)
Diameter coater 600 mm

Connections:

Noise emission:

± 75 dB (A) (measured without product)

Materials:

Electrostatic paint on steel

Electrical connection

200- 240 V (± 5%), 1 phases + 0 and ground,
50/ 60 Hz (other values available on request)
Max. power consumption: 3 kW
Connection value: 16 A

Weight:

Net: ± 260kg
With Packaging: ± 300 kg



Including:

Optional:

Liquid dosing unit